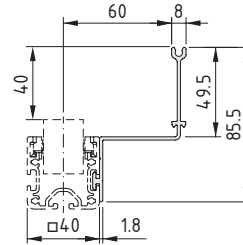




Article number: 0.0.654.09
 Article: Roller Conveyor 6 40x40 E Guide Rail e60, natural



The above-mentioned product's suitability for use in ESD-protected areas (EPA) has been checked in line with the specifications of IEC/DIN EN 61340-5-1:2016 and it meets the relevant requirements.

Typical resistance values at the relevant ambient temperature (measurement voltage: 100 V=)

Measurements ¹	Standard limit values	Test limit values ²
Ambient temperature	23°C ± 2°C	23°C ± 2°C
Leakage resistance	< 1x10 ⁹ Ω	< 1x10 ⁹ Ω
Surface resistance	< 1x10 ⁹ Ω	< 1x10 ⁹ Ω
Volume resistance	< 1x10 ⁹ Ω	< 1x10 ⁹ Ω

¹ Depending on the range of functions and the geometrical dimensions, some measurements may not be relevant.

² Due to the local conditions, the relative humidity during all product tests was 10 - 65 percent.

Depending on the application, the entire solution requires additional resistance if the resistance measurement falls below 1x10⁴ Ω. NB: To ensure safe use in ESD-sensitive environments, measurements must be taken on a regular basis to check that the entire solution in which the product is being used complies with the relevant values (to IEC/DIN EN 61340).

Solingen, 03.02.21