

Datos técnicos

Perfiles y accesorios

A todos los valores de carga descritos en este catálogo se les aplican factores de seguridad para la protección contra el deslizamiento y fallo del material. Siempre se aplica un factor de seguridad >2 , razón por la cual los usuarios pueden utilizar plenamente los valores permisibles.

Perfiles extruídos

Designación: Al Mg Si 0.5 F 25
 Referencia del material: 3.3206.72
 Tratamiento: envejecido artificialmente

Características mecánicas (valores válidos en el sentido de extrusión)

| | |
|---|---------------------------------|
| Resistencia a la tracción Rm | mín. 245 N/mm ² |
| Límite de elasticidad Rp0.2 | mín. 195 N/mm ² |
| Densidad | 2,7 kg/dm ³ |
| Alargamiento hasta rotura A ₅ | mín. 10 % |
| Alargamiento hasta rotura A ₁₀ | mín. 8 % |
| Coefficiente de dilatación lineal | 23,6x10 ⁻⁶ 1/K |
| Módulo de elasticidad E | aprox. 70 000 N/mm ² |
| Módulo de rigidez G | aprox. 25 000 N/mm ² |
| Dureza | aprox. 75 HB-2,5/187,5 |

Tolerancias

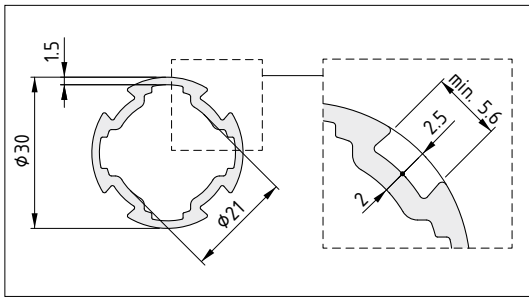
Las deformaciones tales como tolerancia de alineación y planitud cumplen con la norma DIN EN 12020 parte 2. Los perfiles no cortados a medida pueden ser hasta 100 mm más largos que lo indicado, debido a los métodos de fabricación.

Nota: Todos los valores de carga se aplican a cargas estáticas. Cuando hay cargas dinámicas involucradas, los valores máximos deben considerarse como valores comparativos.

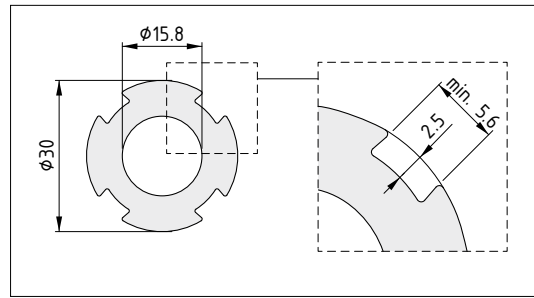
Superficie

Los perfiles de aluminio son anodizados en color natural (C0) y por ello resisten permanentemente la corrosión y los arañazos. La superficie tiene un acabado mate (E6), y está anodizada y comprimida. El grosor mínimo de la capa es de 10µm y su dureza es de 250~350 HV. Esta superficie con anodizado duro permite hacer los cortes prácticamente sin rebabas, de forma que no es necesario desbarbar.

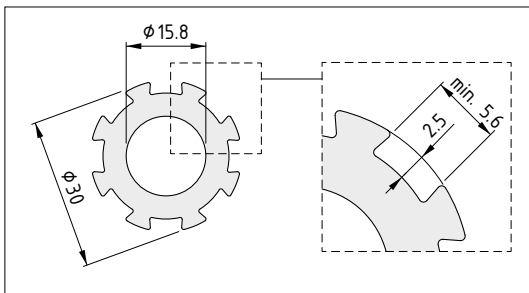
Tubo perfilado D30



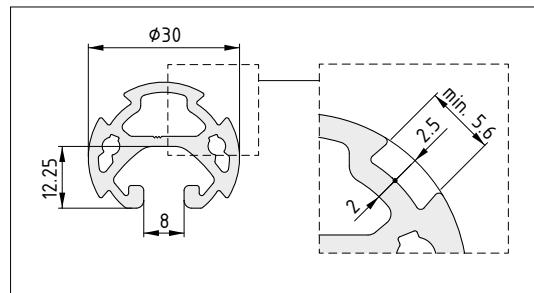
Tubo perfilado D30 HD



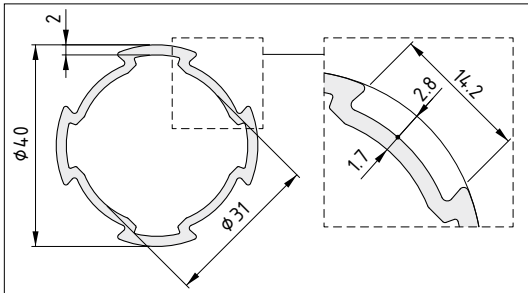
Tubo perfilado D30-45° HD



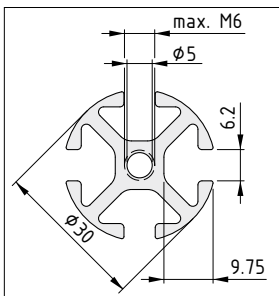
Tubo perfilado 8 D30



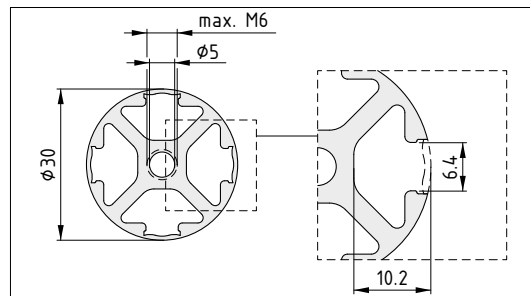
Tubo perfilado D40/D30



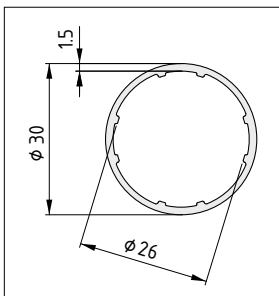
Perfil 6 D30



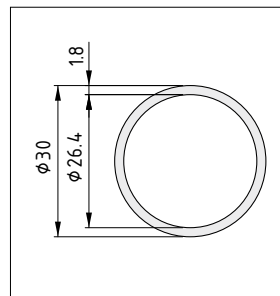
Perfil 6 D30 4NO



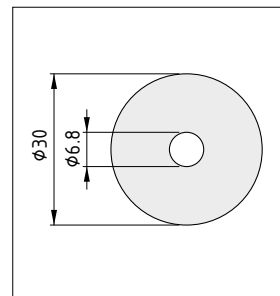
Tubo D30



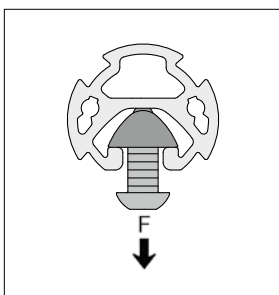
Tubo D30x1,8 KU



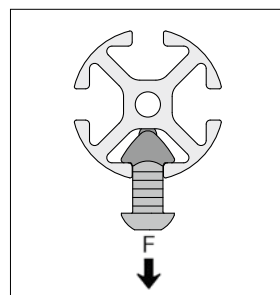
Tubo KH D30x11,6



Carga de tracción



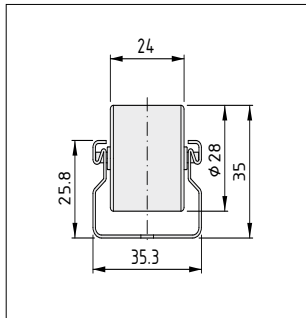
$F_{\text{máx.}} = 3500 \text{ N}$



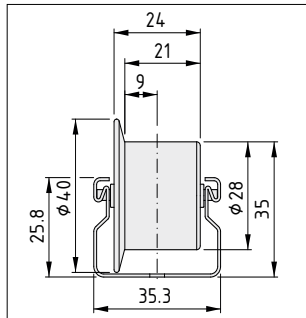
$F_{\text{máx.}} = 1500 \text{ N}$

Carriles de roldanas

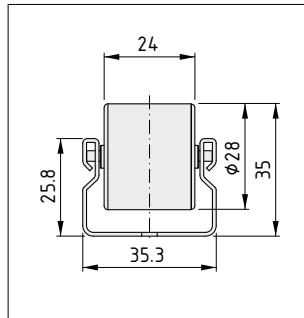
Carril de roldanas St D30



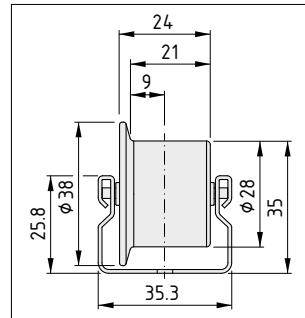
Carril de roldanas St D30 con valona



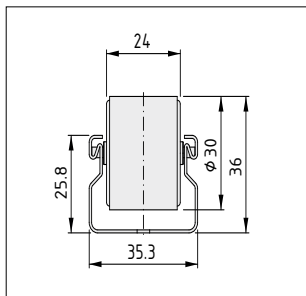
Carril de roldanas St D30 T1



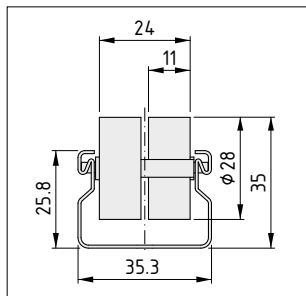
Carril de roldanas St D30 T1 con valona



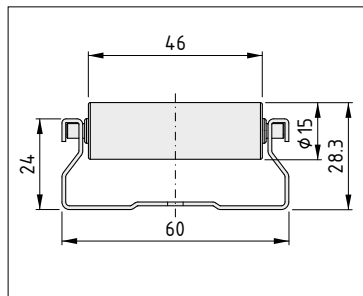
Carril de roldanas St D30 con cubiertas de acero



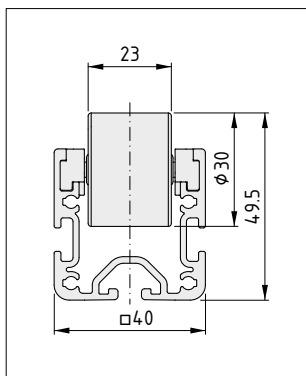
Carril de roldanas St D30/2



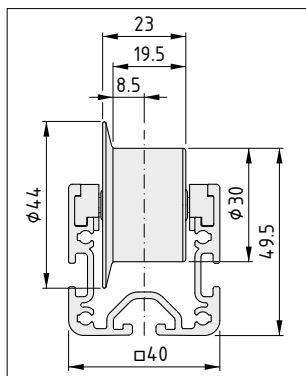
Carril de roldanas St 60x24 D15



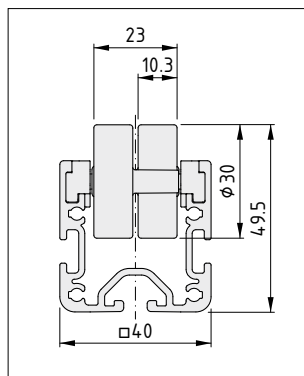
Carril de roldanas 6 40x40 E D30



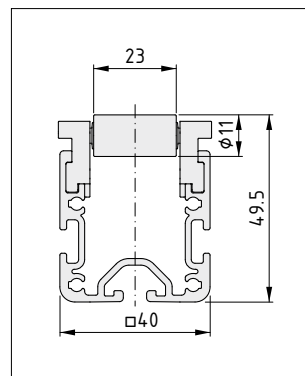
Carril de roldanas 6 40x40 E D30 con valona



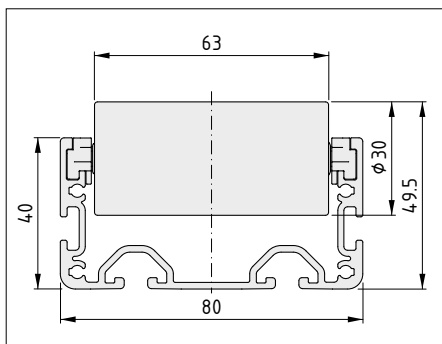
Carril de roldanas 6 40x40 E D30/2



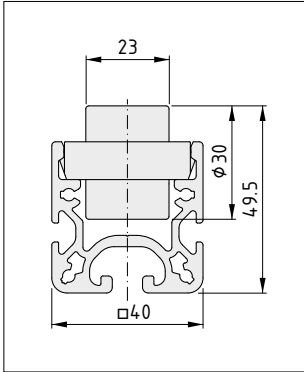
Carril de roldanas 6 40x40 E D30 D11



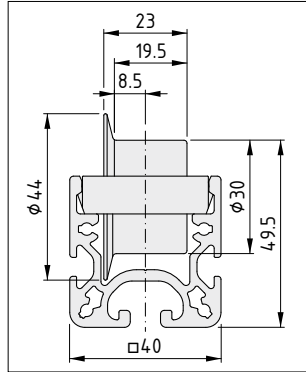
Carril de roldanas 6 80x40 E D30



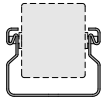

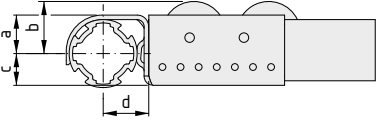
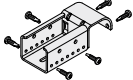
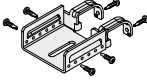
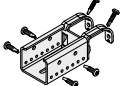
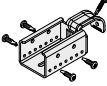
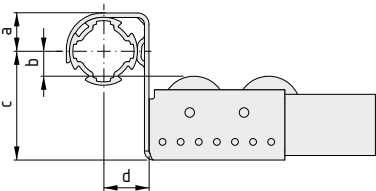
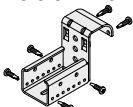
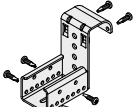
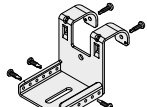
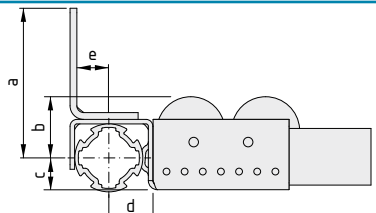
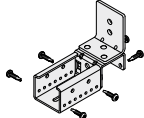
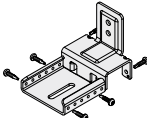
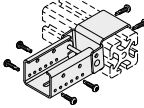
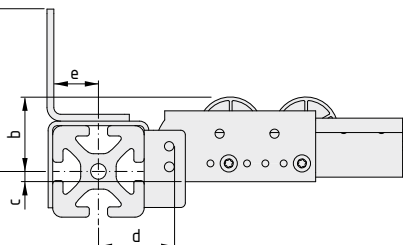
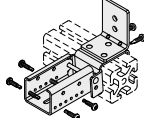
Carril de roldanas 8 D30

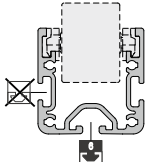
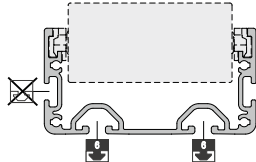
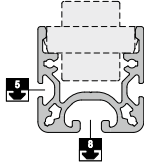
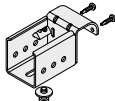
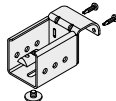
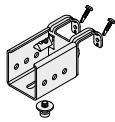
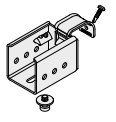


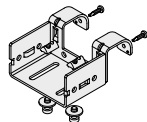


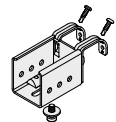
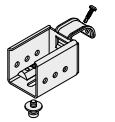
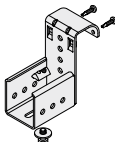
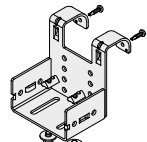
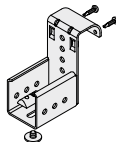
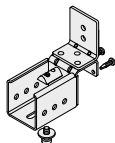
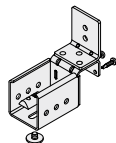


Carril de roldanas 8 D30 con valona



Dimensiones de montaje de los carriles de roldanas St y Al, incluyendo los anclajes

| | Transportador de rodillos St D30 | Transportador de rodillos St 60x24 D15 |
|---|---|---|
| |  |  |
|  | a = 17 mm b = 23 mm c = 14 mm d = 20,5 mm 0.0.642.47  | a = 18 mm b = 24 mm c = 7 mm d = 22,5 mm 0.0.674.02  |
| | a = 18 mm b = 24 mm c = 13 mm d = 22 mm 0.0.647.07  | 0.0.647.06  |
|  | a = 17 mm b = 11 mm c = 48 mm d = 20,5 mm 0.0.642.46  | |
| | a = 17 mm b = 26 mm c = 63 mm d = 20,5 mm 0.0.652.46  | a = 17,5 mm b = 25 mm c = 56 mm d = 22,5 mm 0.0.674.03  |
|  | a = 66 mm b = 23 mm c = 14 mm d = 20,5 mm e = 13 mm 0.0.658.17  | a = 66 mm b = 24 mm c = 7 mm d = 22,5 mm e = 14,5 mm 0.0.681.84  |
| | a = 22 mm b = 22 mm c = 15 mm d = 33,5 mm 0.0.687.62  | |
|  | a = 71 mm b = 31,5 mm c = 5,5 mm d = 34 mm e = 19 mm 0.0.687.61  | |

| Transportador de rodillos 6 40x40 E D30 | Transportador de rodillos 6 80x40 E D30 | Transportador de rodillos 8 D30 |
|---|--|---|
|  |  |  |
| <p>a = 17 mm 0.0.660.57 b = 23 mm c = 28,5 mm d = 18 mm</p>  | | <p>a = 17 mm 0.0.652.48 b = 23 mm c = 28,5 mm d = 18 mm</p>  |
| <p>a = 18 mm 0.0.660.59 0.0.660.60 b = 23 mm c = 28,5 mm d = 22 mm</p>   <p>a = 18 mm 0.0.667.56 0.0.667.57 b = 23 mm c = 29 mm d = 22,5 mm</p>   | <p>a = 17,5 mm 0.0.667.54 b = 23 mm c = 29 mm d = 22,5 mm</p>  <p>a = 18 mm 0.0.667.56 0.0.667.57 b = 23 mm c = 29 mm d = 22,5 mm</p>   | <p>a = 18 mm 0.0.652.58 0.0.652.64 b = 23 mm c = 28,5 mm d = 22 mm</p>   |
| | | |
| <p>a = 17 mm 0.0.660.58 b = 26 mm c = 77,5 mm d = 20,5 mm</p>  | <p>a = 17,5 mm 0.0.667.55 b = 26 mm c = 78 mm d = 22,5 mm</p>  | <p>a = 17 mm 0.0.652.57 b = 26 mm c = 77,5 mm d = 20,5 mm</p>  |
| <p>a = 66 mm 0.0.659.19 b = 23 mm c = 28,5 mm d = 18 mm e = 14 mm</p>  | | <p>a = 66 mm 0.0.662.31 b = 23 mm c = 28,5 mm d = 18 mm e = 14 mm</p>  |